



# The Future of our Church Most Holy Trinity Hinton-in-the-Hedges

## Village Meeting

5<sup>th</sup> June 2024





# Welcome & Introduction - Sam



## Today we aim to:

- confirm why changes are necessary
- summarise what villagers have said
- show you a number of development options
- outline next steps / actions
- provide further opportunity to hear your thoughts



**Why changes are necessary - Harry**



## Our Church plays an important role in the village

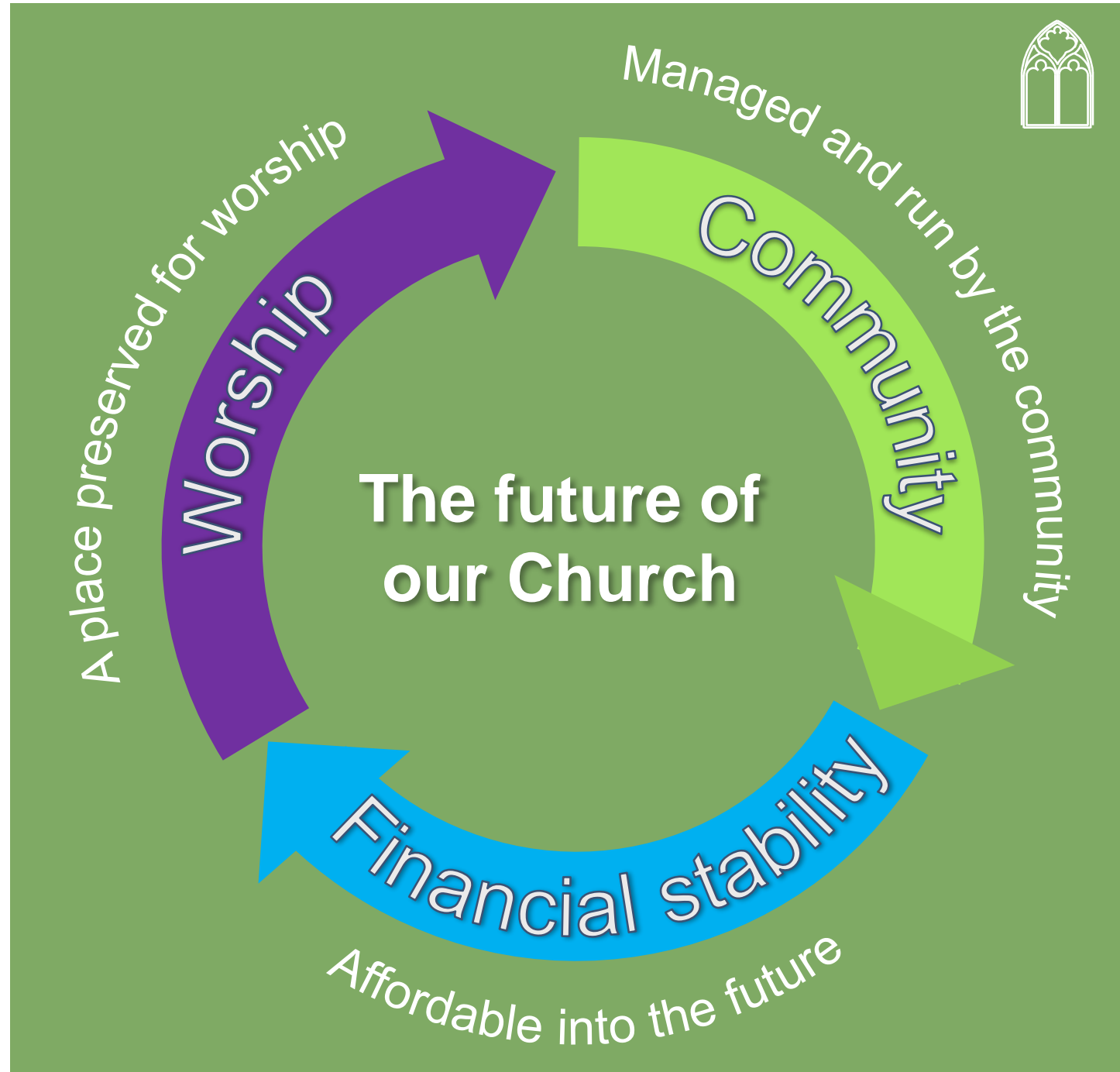


But no organization can rest on its laurels & assume continued success & existence, unless prepared to embrace change

**Our focus has been to investigate solutions that, we believe will:**

- Futureproof the Church plus
- Provide the facilities that will both enable this and
- Satisfy the requirements of the village (survey)

**The solution we would suggest is circular and symbiotic**





## Some pertinent Facts

Individual churches are expected to be self-sustaining from a running / funding perspective

- We estimate a **shortfall of income to expenses** of c £3k p.a. moving forward
- This **excludes** any substantial repair or maintenance – inevitable in the future (5-10 yrs)
- **Clearly a risk that reserves would be drained** – and this *could threaten* the Church's future survival

**The total net worth of the Church today is c£65k**

**This has, at present to cover two grade 1 listed churches**



## What are items of expenditure

### Expenses include:

- Parish share (Rector) – full contribution will now need to be paid (single biggest operational cost)
- Insurance
- Maintenance / Cleaning
- Heating
- Repair/Refurbishment
- The Church raise funds for the wider community

**Costs minimised** through Covid/post Covid period – *not sustainable moving forward*

Parish share is the **largest single element** – *we have not paid full share for past 2 years; we will now*

**Repair/refurbishment difficult to predict**

*Major investment in the past dealt with by grants /fundraising*



# What are the areas of revenue



## ***Sources of income include:***

- Collections from the plate
- Regular monthly donations
- Ad hoc donations to include gift aid
- Events / fundraising
- Grants (One off investment)

The aim is to **increase revenue in all areas** to cover running expenses and build reserves to support future repair/refurbishment

*However.....*

The Church environment does ***not easily lend itself*** to wider community use and fundraising activities

# Summary of issues



- The new vicar, George, will need to be paid!
- Budgeting for future expenses could translate to an annual loss of c£3k
- Very modest wealth/reserves to cover repairs, such that:

The Independent Examiner has stated that:

*“whilst the Church can continue as a going concern, the risk is that any substantial cost or repair in the future could jeopardize this”*



# Every Challenge is an opportunity

## The question:

**Can we make the Church more financially secure and user friendly?.. the answer is yes**

## **Our proposition therefore is that by:**

- Investing to create facilities that allows wider use, offers the best potential to generate revenue & future proof for subsequent generations

## **Why do we say that?**

- Events held show a need for parking, loos & servery
- Experience shows revenue would increase but
- External fund raising must demonstrate community benefit, both in/outside of village



## Village feedback - Jane





## We approached the village for feedback



- Two written communications encouraging feedback
- Visits by members of the team – 7 questions

**Request for feedback positively received**  
**69% response rate – representing 62**  
**separate households**

**Good representation across the village**

**Both quantitative and qualitative feedback**



## Role of the Church in our community

Overwhelming sense that the Church is important to the village with **73%** responding positively

*“It is a beautiful building, steeped in history both in the building and the grounds and provides a degree of calm and peacefulness, contributing mightily to the ‘village atmosphere’ of Hinton”*

### **Feedback to consider:**

Under-utilised, limited role and profile, could improve communication about its activities.

Community engagement difficult without a Rector.



## Views about worship

71% of respondents recognise the importance of the Church as a place of worship, this includes those who are not religious.

*“I know some people say that it is not necessary to have a building to worship God, but personally I think that having a central building to bring people together for shared worshipping is essential”*

### **Feedback to consider:**

Focus on community important, environment uninviting/not welcoming – sombre/dull/pompous, cold and uncomfortable





## Why and why now?

Some villagers are struggling to understand what the issue is and what has changed

*“The communications on this concept have been poor and the reasons for it are also not clear”*

### **Feedback to consider:**

- Improve communication
- What is the problem statement?
- Explain the primary objective







## Development of church environment

**68%** of households said they would support development of the church environment, **18%** saying 'no' and **13%** 'not sure' or 'depends'. There are a diverse range of views on the type of development. Little support for a major extension.

*"Development of and growth of our church will be enhanced by community use and encompassing an all-inclusive attitude"*

*"I think to embark on a costly and ambitious addition to the church would be quite wrong"*

### **Feedback to consider:**

Financial viability – income and costs, evidence of usage and avoid creating a 'burden' on the village



## Facilities that people would like to see

**79%** of households made suggestions about facilities with the top two suggestions being **toilet facility (41)** and a **small kitchen area (33)**, followed by improved **heating (12)**, **parking (12)**, **water (10)** and **flexible space (9)**

*“The church building and its grounds are absolutely lovely as they are...”*

### **Feedback to consider:**

Get the basics right first, improve care of grounds and cleaning/maintenance of church, use the bells, hold events to test usage and improve marketing, carefully consider maintenance/cleaning of any new facilities



## Fund raising

**84%** of households said they would be willing to **support** the church in any fund-raising activities. The top three suggestions: **church festivals/ exhibitions/ craft shows (11); financial support (11); talks/ speakers (10)**

*“I would be very supportive of raising funds for the Church of the Holy Trinity. It would be helpful in this if it was more widely understood what the costs involved were and how much money was required to be raised to secure the church’s future...”*

### **Feedback to consider:**

Fund raising is not necessarily linked to development, annual parish fee, stable funding model required, sharing resources across the village - links to HiHAT/NPFA





## Engagement with the Church

**81%** of villagers stated that if our church was at risk of closure they would be prepared to help save it by engaging more, albeit not necessarily through attending church services.

*“I believe with more proactive and imaginative engagement it is possible to increase congregation sizes. Likewise, I believe there is scope for more money raising initiatives to support the church”*

### **Feedback to consider:**

Don't reinvent the wheel, speak to other churches facing similar challenges, communicate and seek input. Any future plans need to be affordable and sustainable.





## Summary

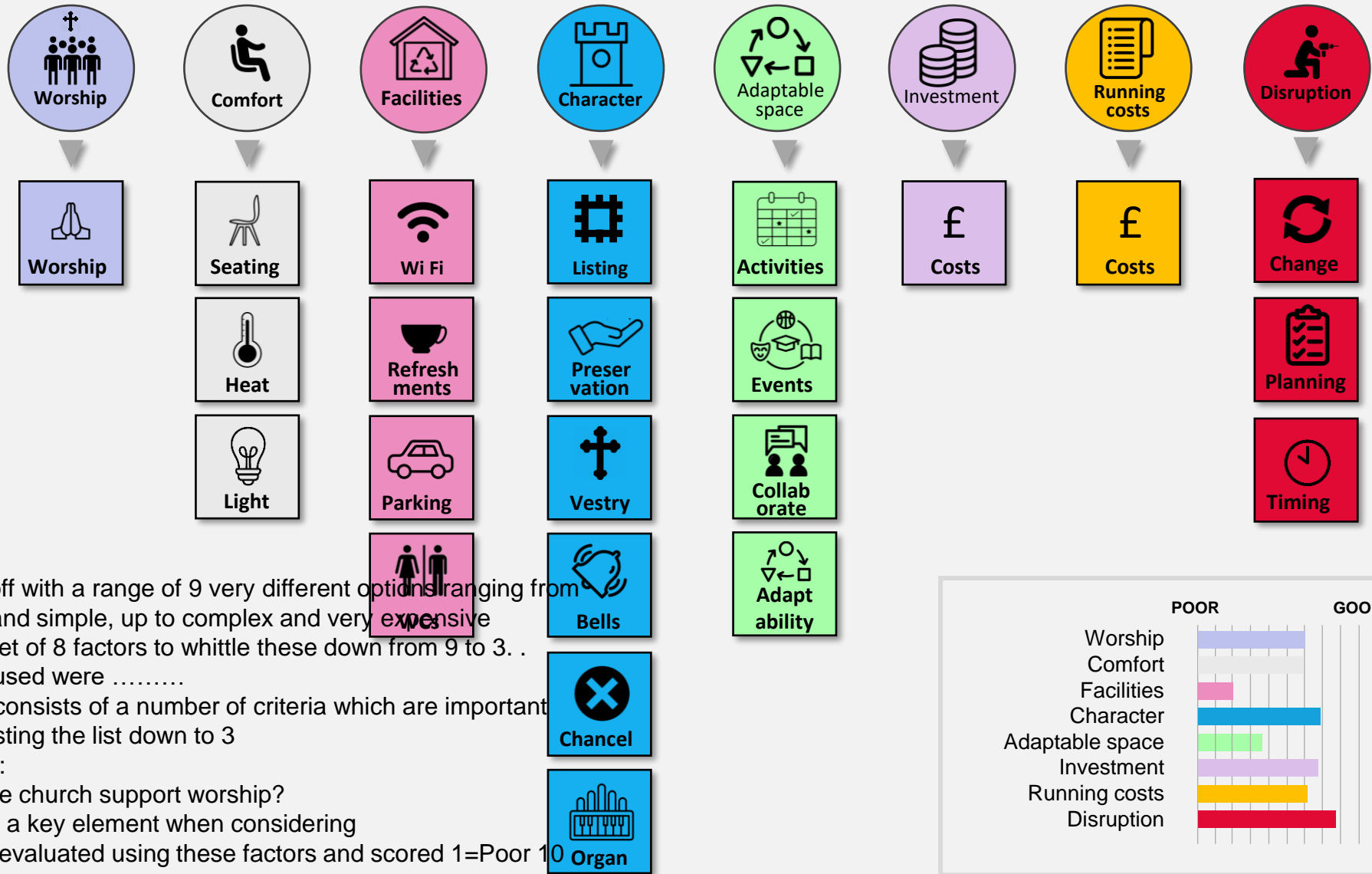
- **Considerable support for the church**
- **Must get the basics right** – seek to ‘reset’  
(Cleaning/Maintenance/Bells/Grounds)
- Environment/services to be **more ‘welcoming’**
- **Fundraising can and should be progressed now** prior to any development
- **Communicate, engage, communicate again!**
- **Development of church has some support**  
‘with caution’



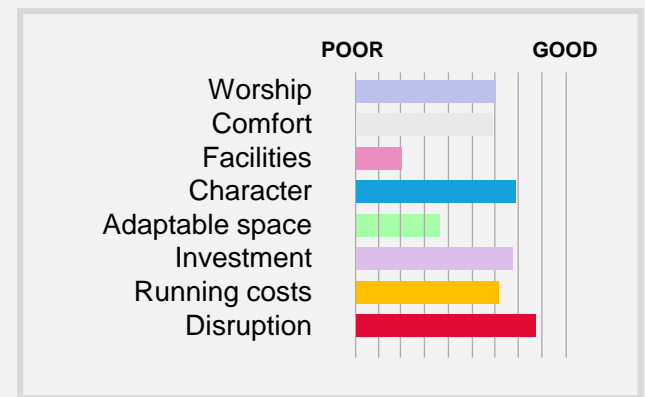
## 9 x Possible development options - Antony



# 8 key factors to consider with each development option:



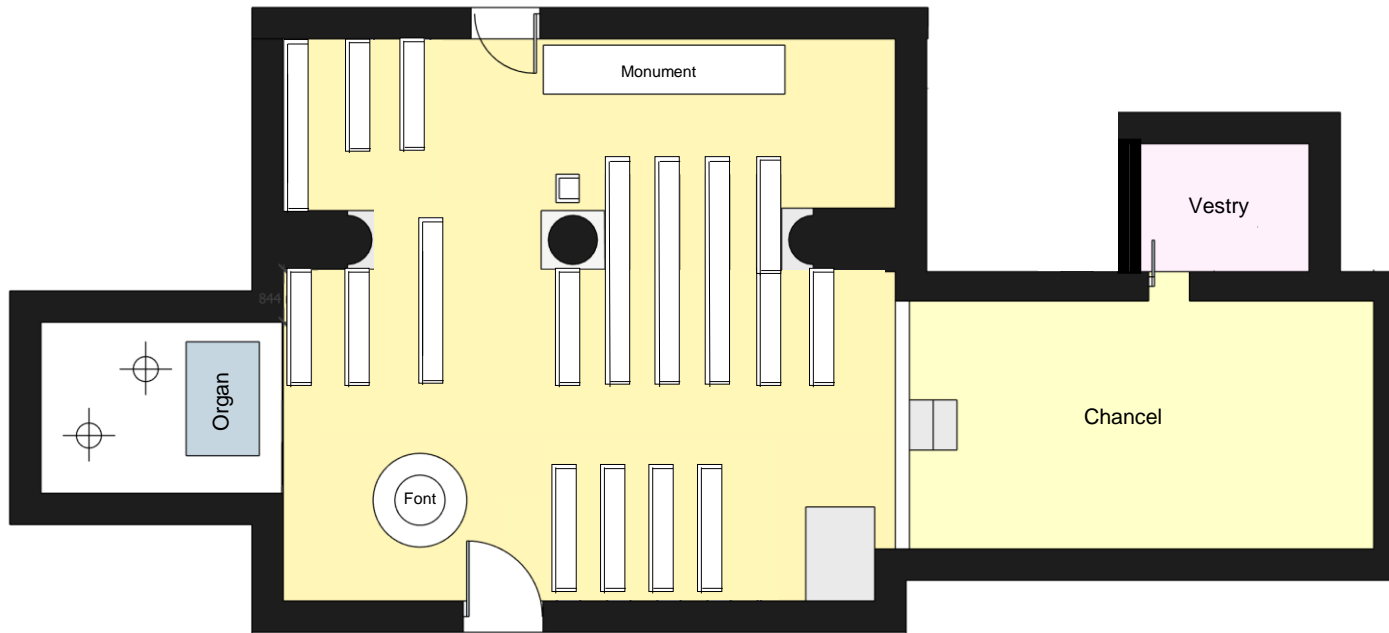
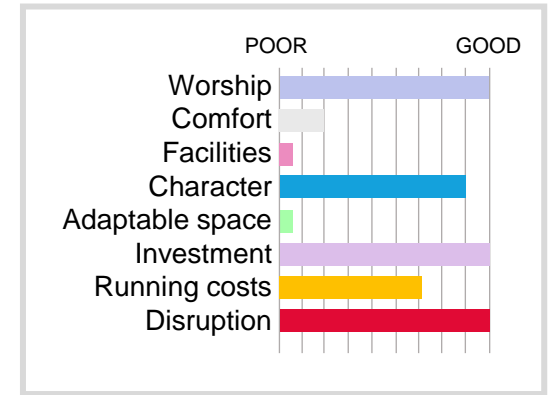
We started off with a range of 9 very different options ranging from a light touch and simple, up to complex and very expensive. We used a set of 8 factors to whittle these down from 9 to 3. The factors used were ..... Each factor consists of a number of criteria which are important when shortlisting the list down to 3. For example: How does the church support worship? Facilities are a key element when considering... Each option evaluated using these factors and scored 1=Poor to 10=Good. This enabled us to shortlist the 3 best options.



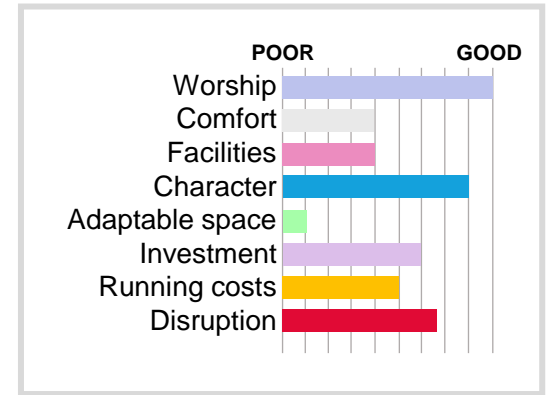
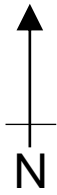
1 = POOR 10 = GOOD



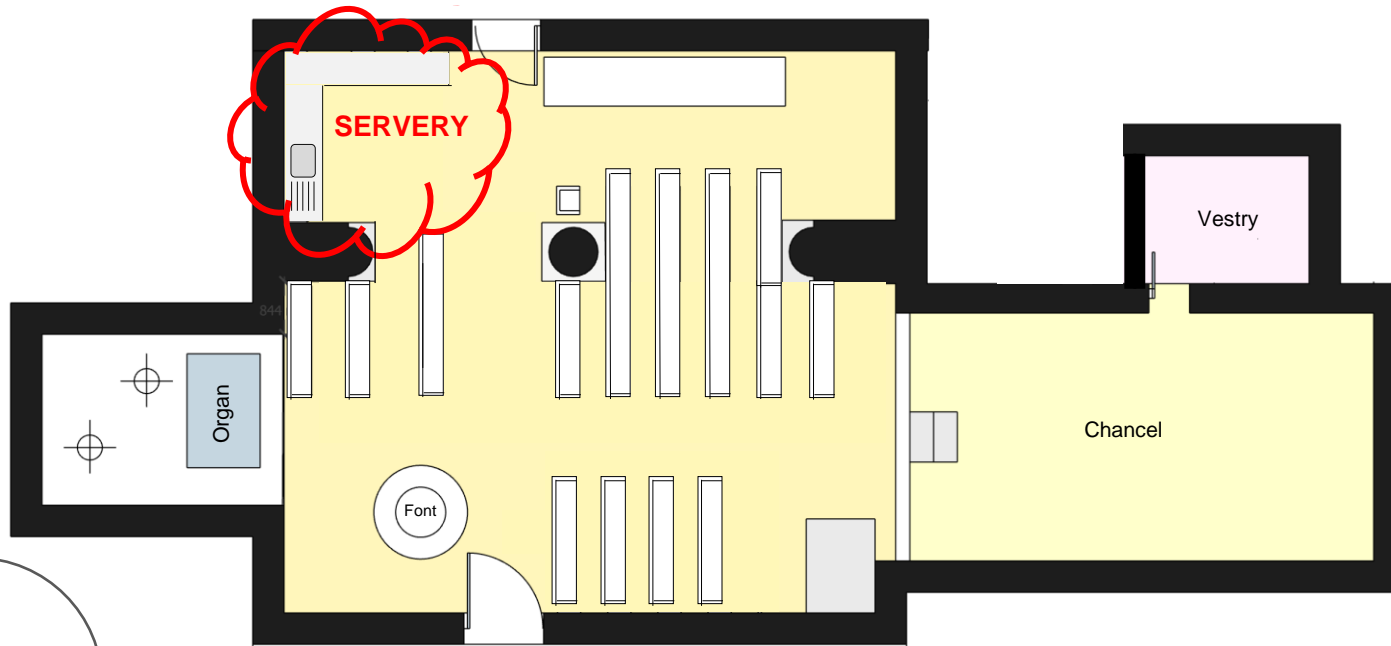
# Existing – No change | How does the present layout perform?



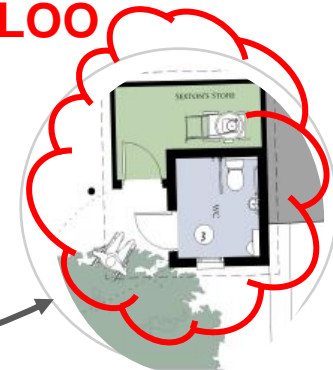


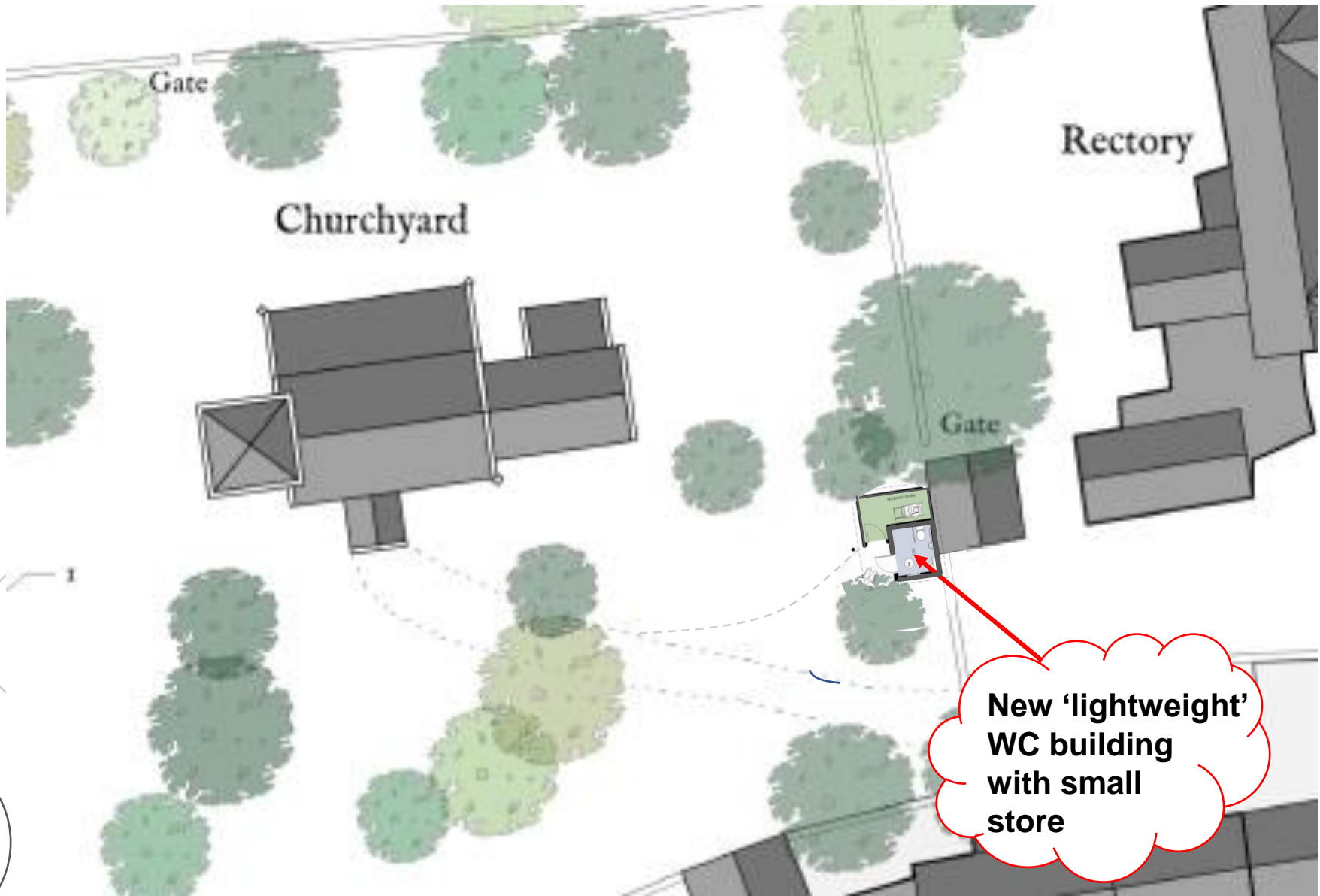
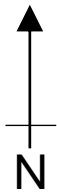


1

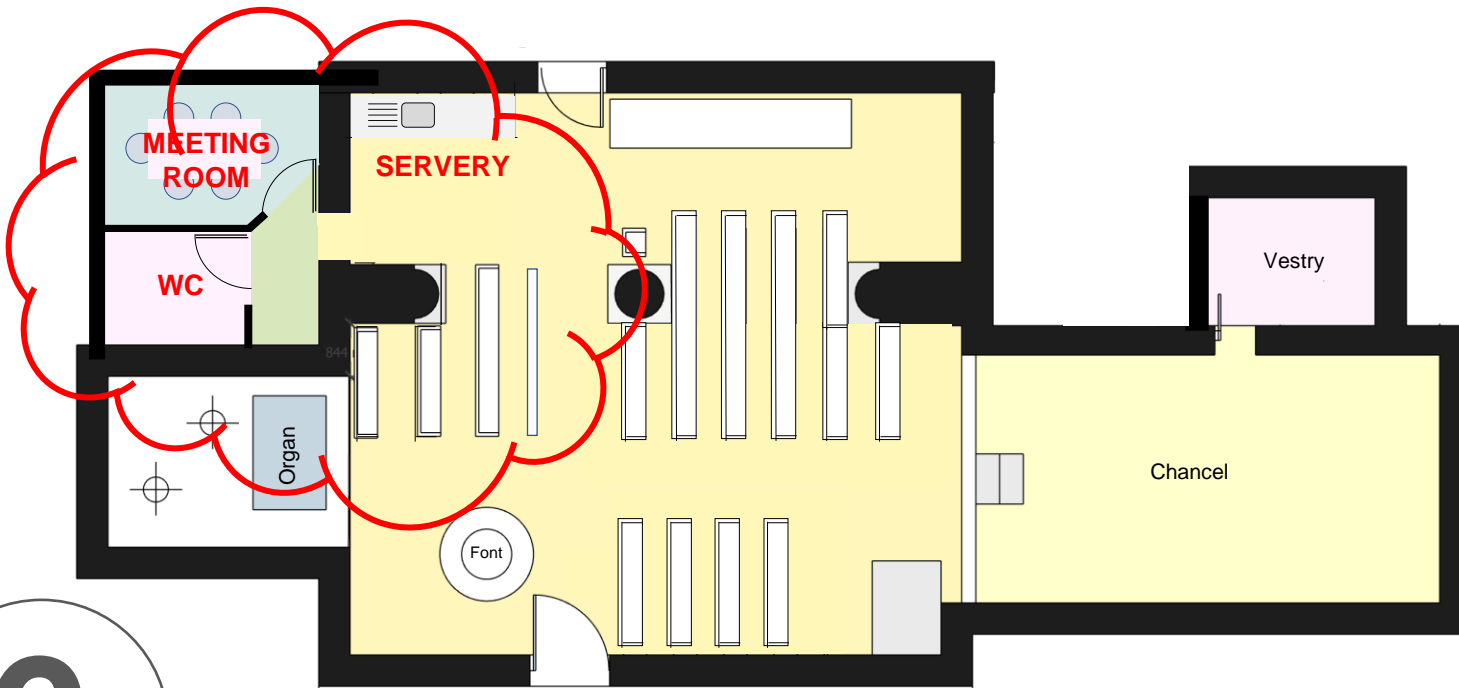
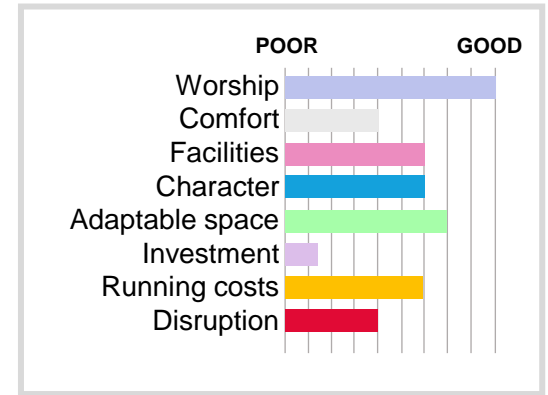
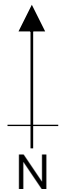


**EXTERNAL  
LOO**

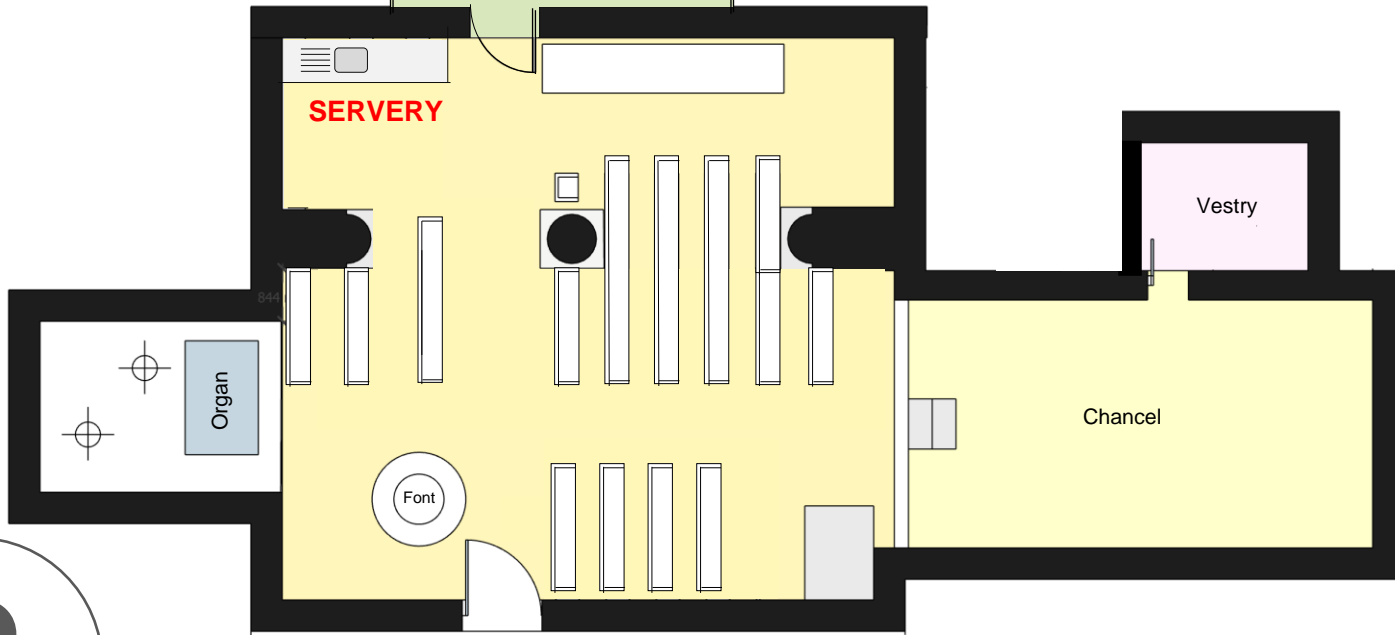
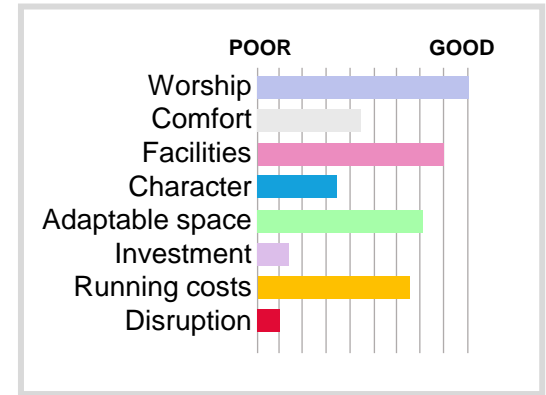
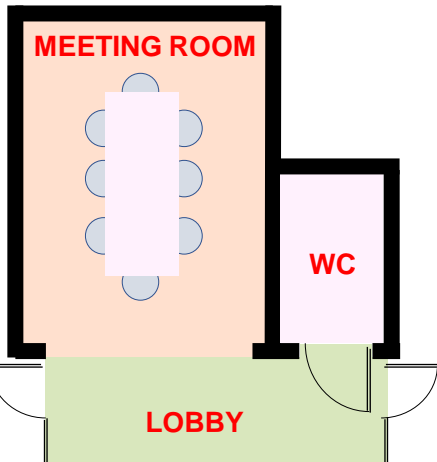
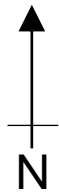




1



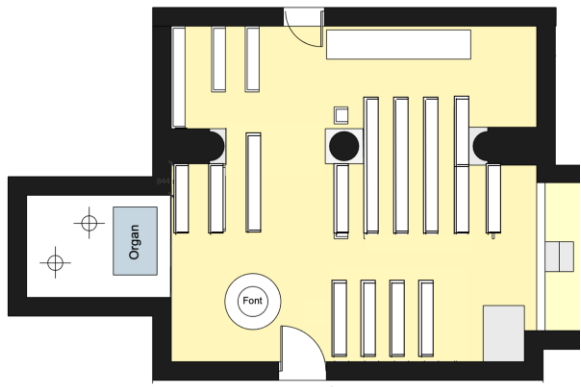
6



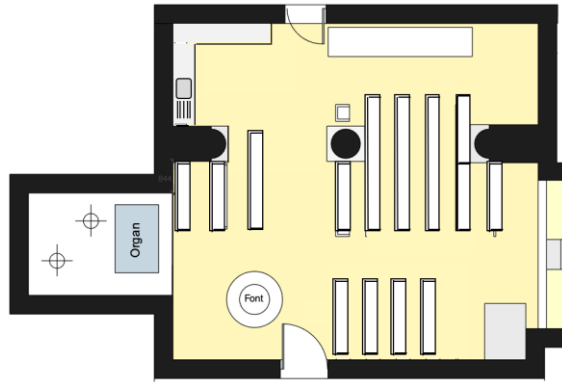
8



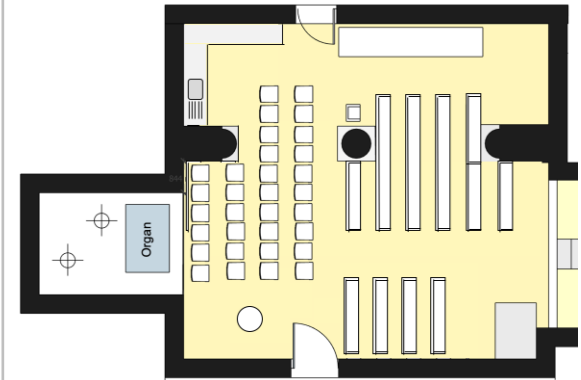
### EXISTING



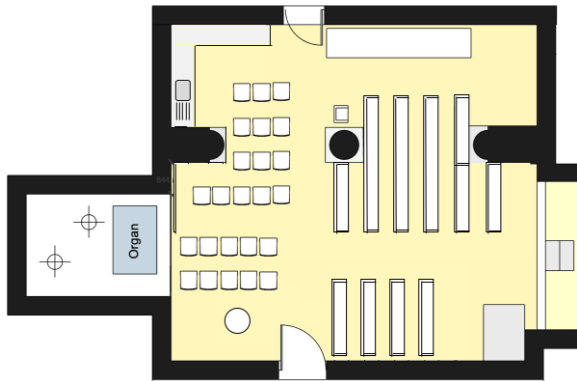
### W/SERVERY



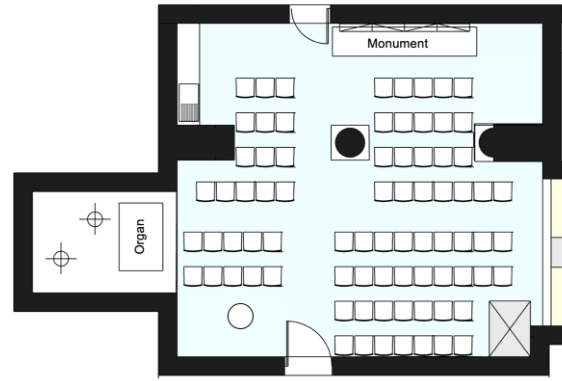
### SEATS AT REAR



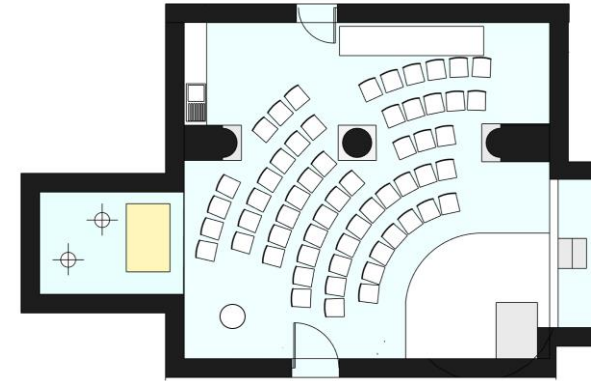
### SEATS AT REAR TURNED



### ALL SEATS TURNED



### SEATS - THEATRE





# There are other factors that bring their own challenges....

A successful pub continuing to grow



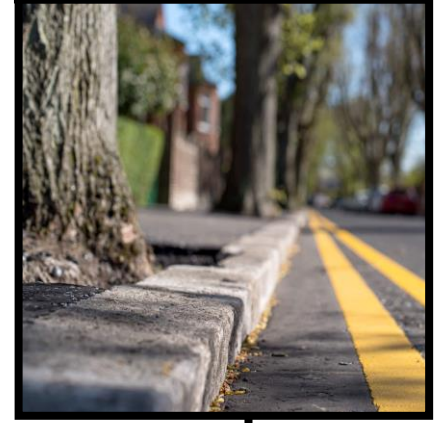
Limited parking space around the Village Green



Farm & Emergency vehicles require clear access



Little appeal for traffic control



Parking limitations

Cricket pitch?



Village Green?

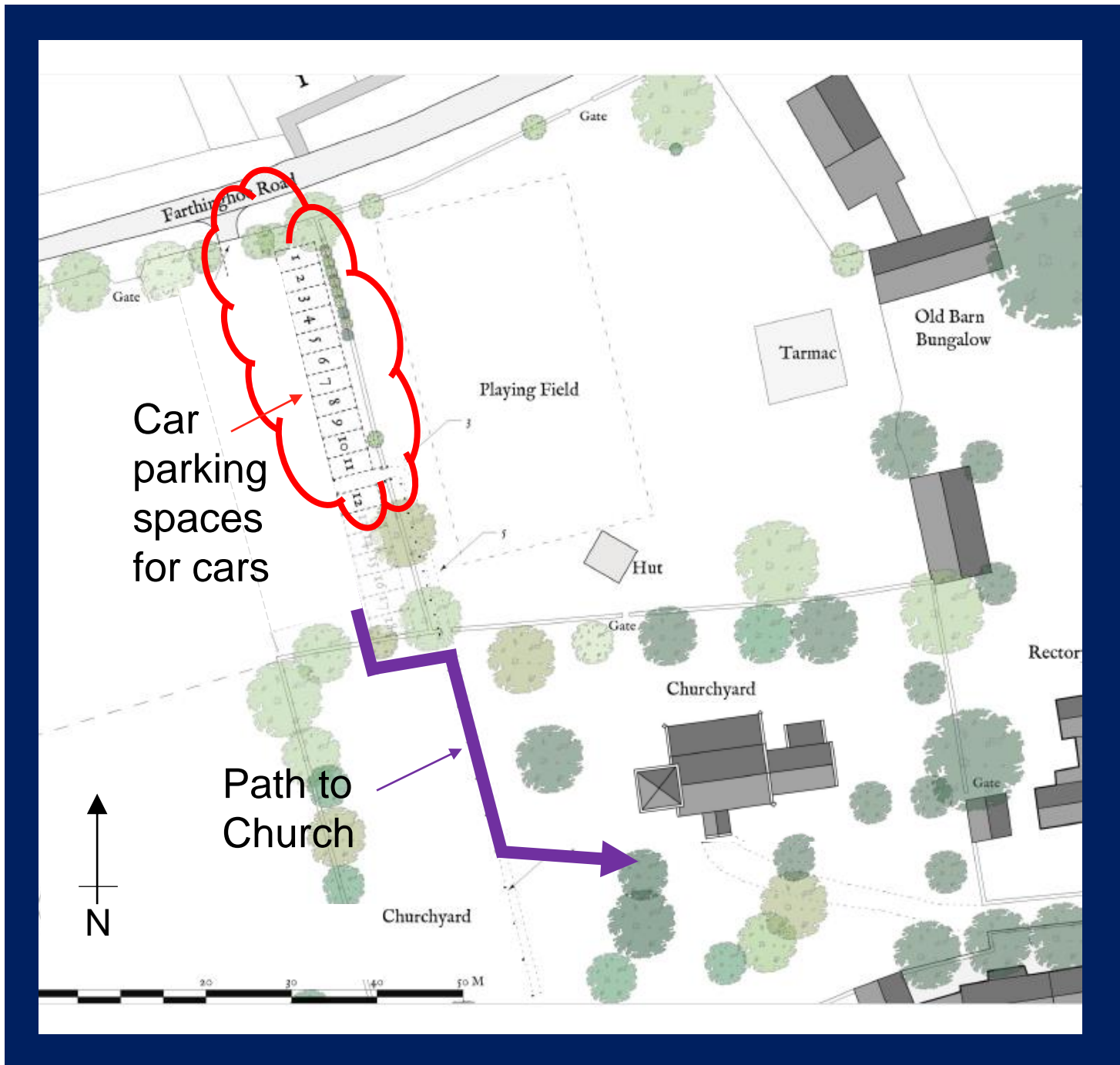


Streets?



or.. Glebe land?







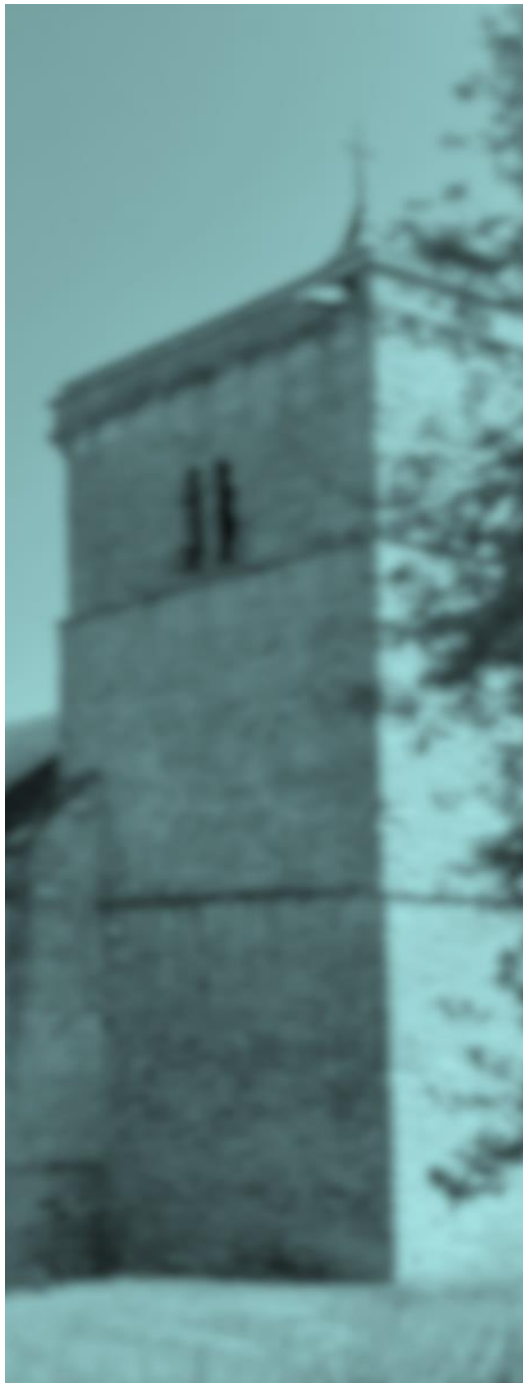
## Development summary

Numerous options for alterations to the interior layout of the church are being explored in more detail to provide:

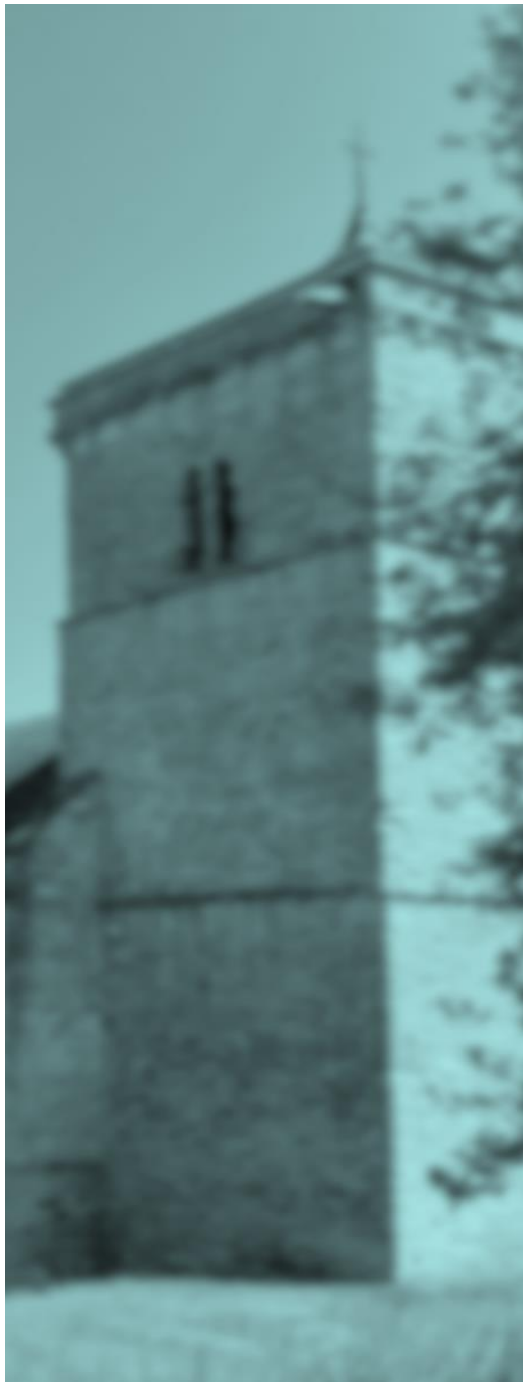
- A more ***comfortable*** space
- Better opportunity for ***collaboration***
- A ***sociable, welcoming*** environment where more people will be attracted to visit and stay
- A place where ***activities*** and ***events*** can be conducted

3 preferred options now being worked through in detail



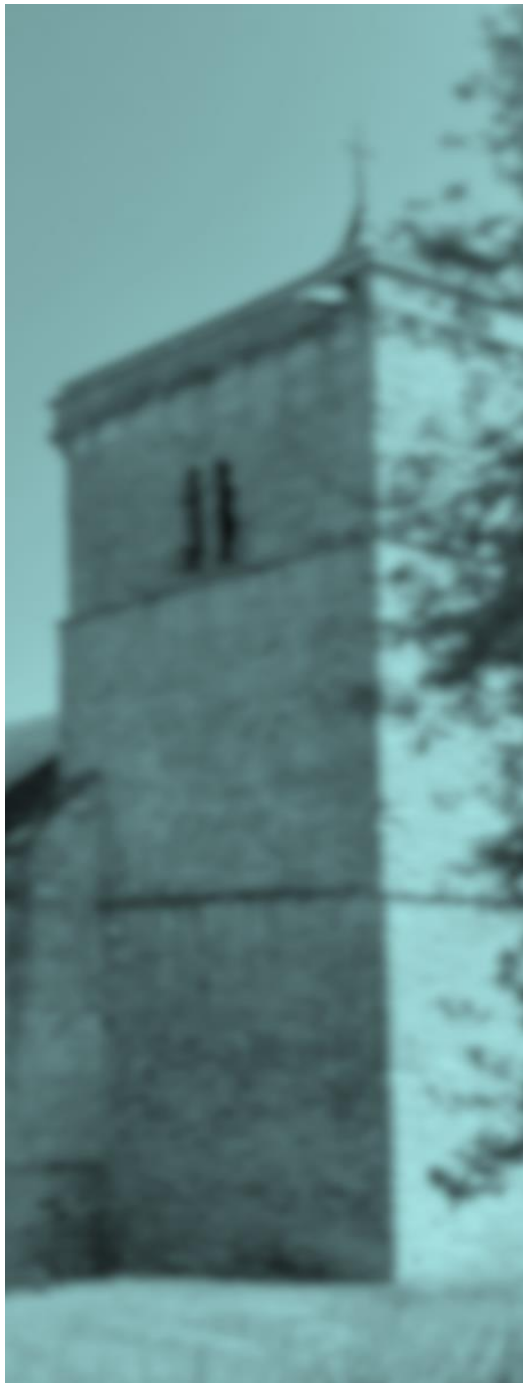


## Next steps and actions - Sam



What actions do we need to take?







**We need your help –  
please get involved**





**Thoughts & Questions?**